

FOURTH WALL FOLKESTONE

USING THE SPACE: THE DETAILS

Fourth Wall Folkestone is a Community Interest Company. All profits go back into the running of the space and enable us to offer an accessible programme to our community.

The space can be hired in two ways:

HOURLY HIRE:

For activities that would sit outside of our programming (eg. meetings, small workshops)

EXHIBITION HIRE:

For projects that fit with our aims and values (eg. exhibitions, open studios)

Both types are for half of the space. By hiring the space you understand that there may be things happening on the other side at times that do not clash with your hire. Eg. An exhibition in the gallery side, and the studio side is used outside of hours for a meeting.

SAFEGUARDING:

If you are planning to run workshops with children, young people or vulnerable adults then it is your responsibility to have an up to date enhanced DBS check.

INSURANCE:

It is your responsibility to have public liability insurance and cover for your work and equipment. A-N offer annual membership which includes £10m Public & Products Liability (PPL) insurance and £5m Professional Indemnity (PI) insurance. Details [here](#).

ACCESSIBILITY:

We are committed to making our space as accessible as possible. Full details can be found in our access document on our [website](#). Please let us know if there are any other reasonable adjustments that we can make to make the space suitable for your hire.

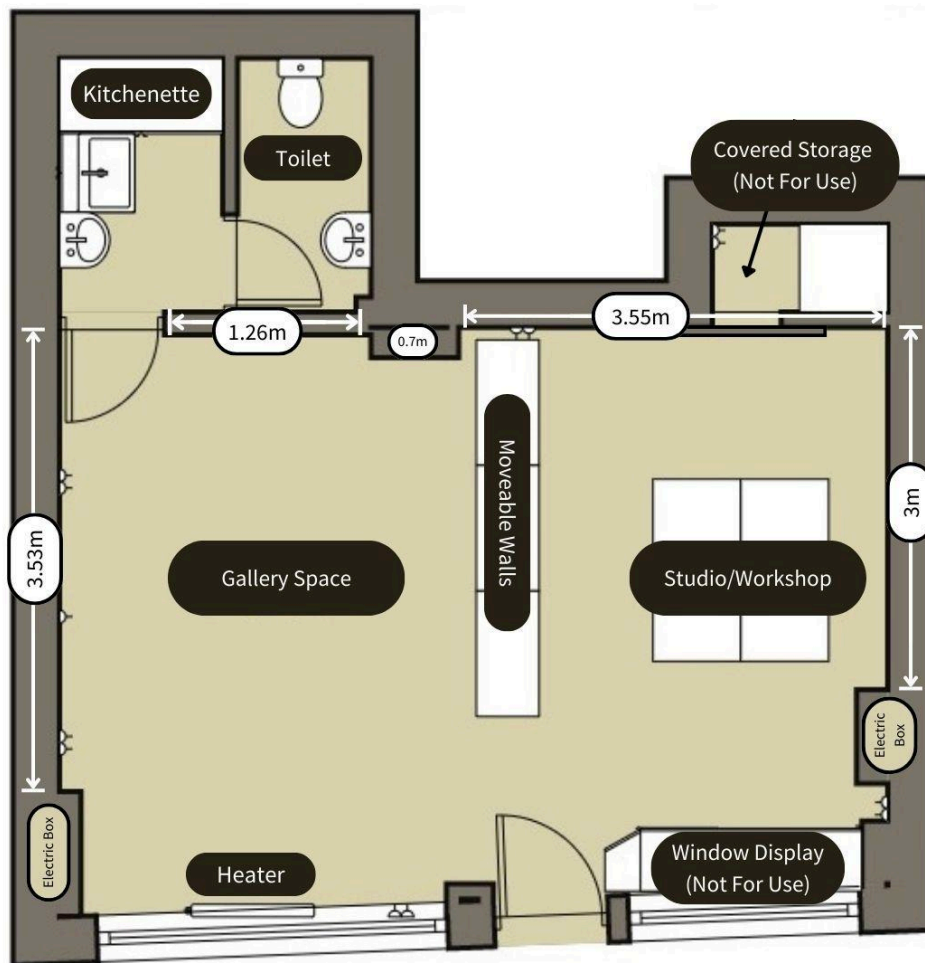
PRACTICAL INFORMATION

BASIC DIMENSIONS AND FLOOR PLAN:

Ceiling Height: 2.9m

Window (Studio Side): 1.85m x 1.67m






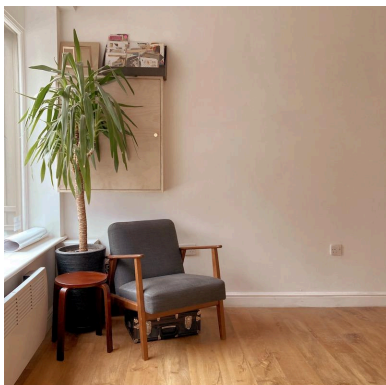
Window (Gallery Side): 2.79m x 1.47m



Proposals are for half the space as seen in the floorplan above. Monthly hires will usually take the Gallery side, hourly hires will usually be in the Studio side - let us know if you have a need for a particular side. If your project needs more space, do include further details in your answers on the proposal form.

Please note: the moveable walls are often needed to be used as room dividers. There is no storage space available. It can get cold, please wear layers!

AMENITIES (ALL MEASUREMENTS ARE IN CM):

	
<p>3x 'Moving Walls' with locking wheels w100 x d33 x h183</p>	<p>A Board Fits artwork size w30 x h30</p>
	
<p>White Plinth w40 x d40 x h70</p>	<p>White Plinth w40 x d40 x h100</p>
	
<p>Particleboard Plinth w40 x d27.5 x h81</p>	<p>Comfy Chair and plant These stay in the gallery space</p>



Peg Boards x3
w50 x h125
Long Shelves x6 - Short Shelves x12

Plinths for Peg Boards x2
w40 x d40 x h125



Wooden low step
w39 x d36 x h50

Low dark wood stools x2
Diameter 32 x h35



Tall metal & wood stool
Diameter 32 x h70

6x tall yellow stools

	
<p>6x Fold up white metal chairs</p>	<p>3x Black square floor cushions w52 x h52</p>
	
<p>1x Bean Bag</p>	<p>Wooden browser for prints w56 x d40 x h76</p>

Other:

- + Black out blinds on windows and door
- + Picture Hanging System for windows
- + A selection of shelves (various sizes and materials)
- + Large Easel (w56 x h161), Small Easel (w16 x h42)
- + Wooden screw together benches
- + Extension cable (4 socket, 10 metre)
- + Kettle, mugs, tea and coffee (please bring your own milk if needed)
- + Fridge (with a small freezer compartment)
- + Drill and basic tools available to borrow
- + Wifi

All consumables (eg. nails, screws, masking tape, paint) and any workshop materials are to be provided by yourself.